



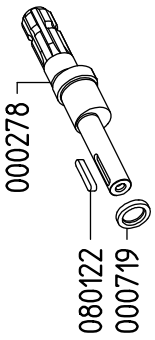
SERIE - SERIES
KAPPA

KAPPA 55 1C 802700
KAPPA 55 TS 1C 804700
KAPPA 55 VA 802600
KAPPA 55 TS FVA 804600

KAPPA 65 1C 803700
KAPPA 65 TS 1C 805700
KAPPA 65 VA 803600
KAPPA 65 TS FVA 805600

KIT 624	KIT 545	KIT 547
870026	606246	606248
*		
CODICE CODE	CODICE CODE	CODICE CODE
Q.TA' Q.TY	Q.TA' Q.TY	Q.TA' Q.TY
090308 1	110127 6	010204 3
090350 3	606304 6	030143 3
110127 6		

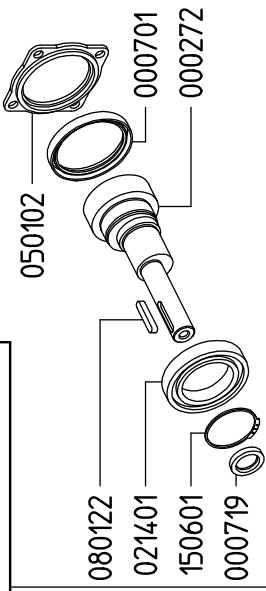
KAPPA 55 TS 1C



000278
 080122
 000719

Variante versione TS 1C rispetto alla 1C
 Variables of version TS 1C compared to 1C

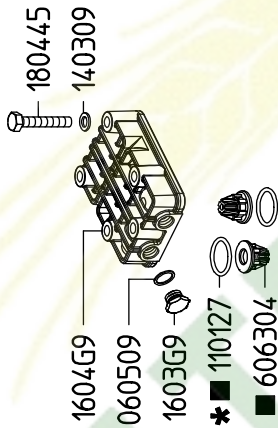
KAPPA 55 TS FVA



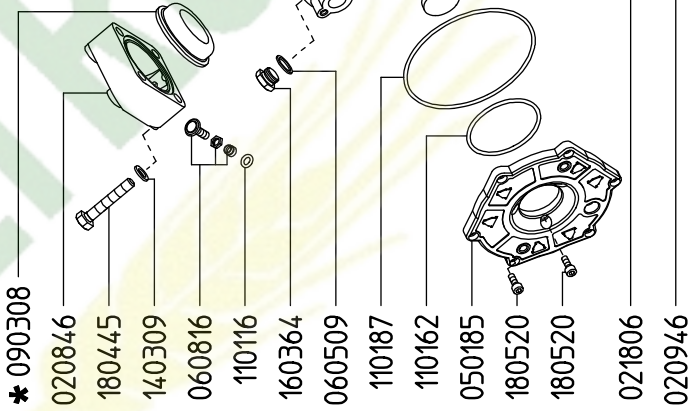
050102
 080122
 021401
 150601
 000719

Variante versione TS FVA rispetto alla 1C
 Variables of version TS FVA compared to 1C

KAPPA 55 1C

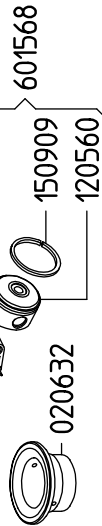


1604G9
 060509
 1603G9
 * 110127
 ■ 606304



* 090308
 020846
 180445
 140309
 060816
 110116
 160364
 060509
 110187
 110162
 050185
 180520
 180520
 021806
 020946

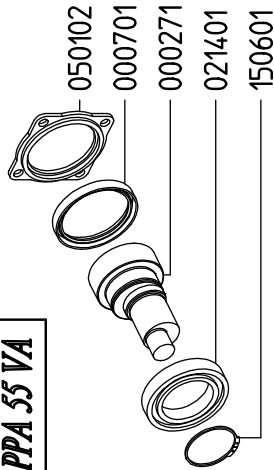
KAPPA 65



151918
 150207
 150615
 150909
 120560

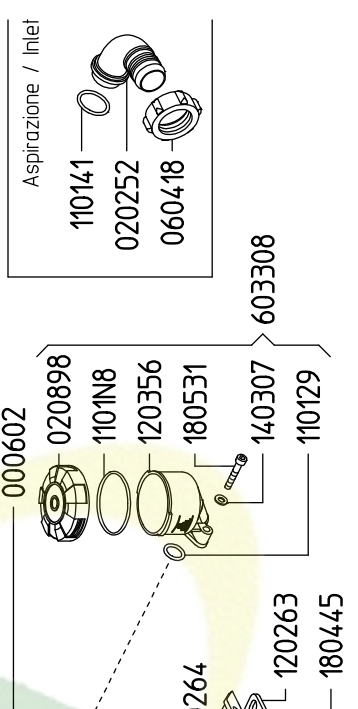
Variante versione KAPPA 65 rispetto alla KAPPA 55
 Variables of version KAPPA 65 compared to KAPPA 55

KAPPA 55 VA



050102
 000701
 000271
 021401
 150601

Variante versione VA rispetto alla 1C
 Variables of version VA compared to 1C



180407
 140309
 050196
 110148
 000749
 021405
 000274
 150203
 150615
 150910
 120562
 151918
 030250
 000106
 030250
 030130
 000602
 020898
 1101N8
 120356
 180531
 140307
 110129
 603308
 060543
 160364
 120264
 120263
 180445
 Aspirazione / Inlet
 110141
 020252
 060418